

OPTIONAL DIGITAL FLOW METER



1 Year Warranty

Retrofittable for use with Legacy models Advantage temperature control units SK-G, SK-T & SK-HE.

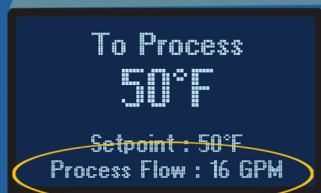
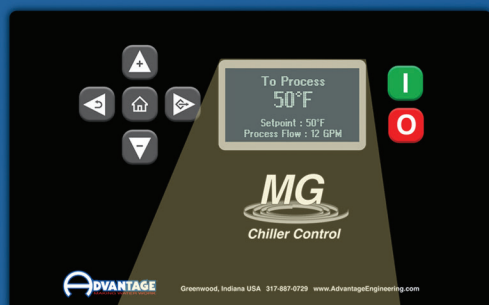
Temperature Control Units Portable Water Chillers

Stainless steel assembly with rotating paddle wheel provides a pulsed output fed to the control instrument for display of the current flow.

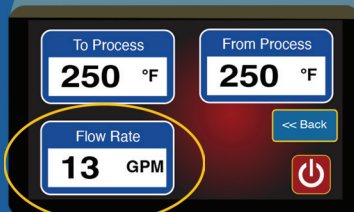
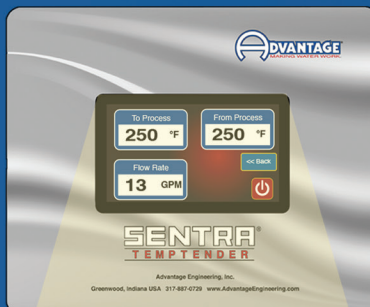
- Green Power On LED confirms that power is applied to the flow meter.
- Red Flashing LED indicates flow. Rapid flashing indicates high flow.

Available for these Control Instruments

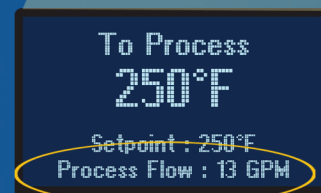
MG Control Instrument
Portable Water Chiller



T Control Instrument
Temperature Control Unit



G Control Instrument
Temperature Control Unit



Application	Model	Used on These Models	Connection	Minimum Flow		Maximum Flow	
				GPM	LPM	GPM	LPM
Temp Controller*	FM1	Up to 3 hp	1¼" MPT	6	23	80	303
Temp Controller*	FM2	5 & 7.5 hp	2" MPT	15	57	120	454
Chiller	FM1	2-10 ton	1¼" MPT	6	23	80	303
Chiller	FM2	15-30 ton	2" MPT	15	57	120	454

*250°F Maximum fluid temperature.



Proudly Made In The USA since 1977

Since product innovation and improvement is our constant goal, all features and specifications are subject to change without notice or liability.

525 East Stop 18 Road • Greenwood, IN 46142 • Phone: 317.887.0729 • www.AdvantageEngineering.com