

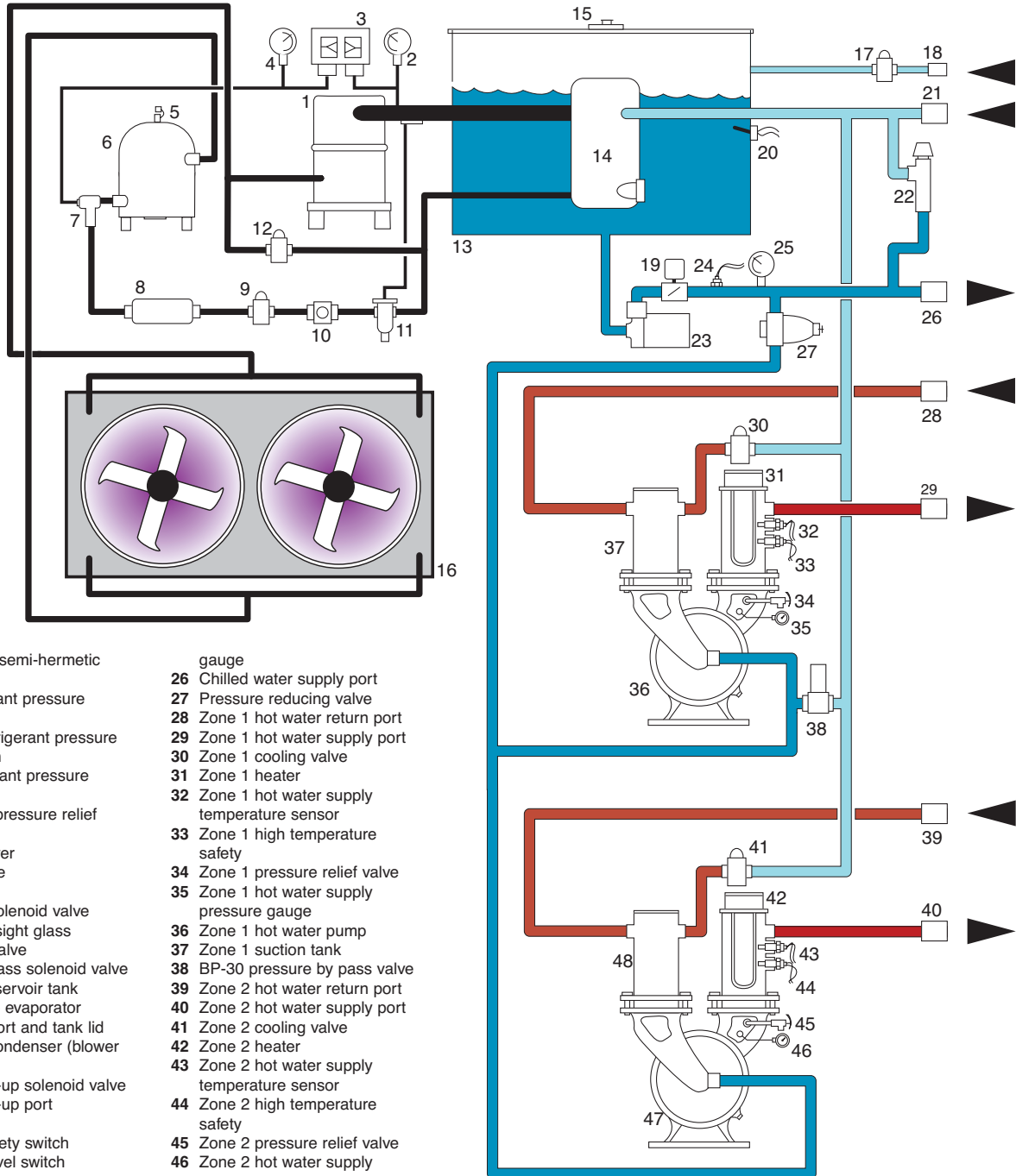


TEMPERATURE CONTROLLERS... PORTABLE CHILLERS... CENTRAL CHILLERS... PUMP TANK STATIONS... TOWER SYSTEMS...

SUBJECT: 3 - 30 TON AIR COOLED TRI-TEMP SCHEMATIC (TYPICAL)

#7-G-162

9/19/1995



- | | |
|---|---|
| 1 Hermetic or semi-hermetic compressor | 26 Chilled water supply port |
| 2 Low refrigerant pressure gauge | 27 Pressure reducing valve |
| 3 High/low refrigerant pressure safety switch | 28 Zone 1 hot water return port |
| 4 High refrigerant pressure gauge | 29 Zone 1 hot water supply port |
| 5 Refrigerant pressure relief valve | 30 Zone 1 cooling valve |
| 6 Liquid receiver | 31 Zone 1 heater |
| 7 Service valve | 32 Zone 1 hot water supply temperature sensor |
| 8 Filter-drier | 33 Zone 1 high temperature safety |
| 9 Liquid line solenoid valve | 34 Zone 1 pressure relief valve |
| 10 Refrigerant sight glass | 35 Zone 1 hot water supply pressure gauge |
| 11 Expansion valve | 36 Zone 1 hot water pump |
| 12 Hot gas bypass solenoid valve | 37 Zone 1 suction tank |
| 13 Insulated reservoir tank | 38 BP-30 pressure by pass valve |
| 14 Brazed plate evaporator | 39 Zone 2 hot water return port |
| 15 Manual fill port and tank lid | 40 Zone 2 hot water supply port |
| 16 Air cooled condenser (blower or fans) | 41 Zone 2 cooling valve |
| 17 Water make-up solenoid valve | 42 Zone 2 heater |
| 18 Water make-up port connection | 43 Zone 2 hot water supply temperature sensor |
| 19 Low flow safety switch | 44 Zone 2 high temperature safety |
| 20 Reservoir level switch | 45 Zone 2 pressure relief valve |
| 21 Chilled water return port | 46 Zone 2 hot water supply pressure gauge |
| 22 By pass valve | 47 Zone 2 hot water pump |
| 23 Chilled water pump | 48 Zone 2 suction tank |
| 24 Chilled water supply temperature sensor | |
| 25 Chilled water supply pressure | |