



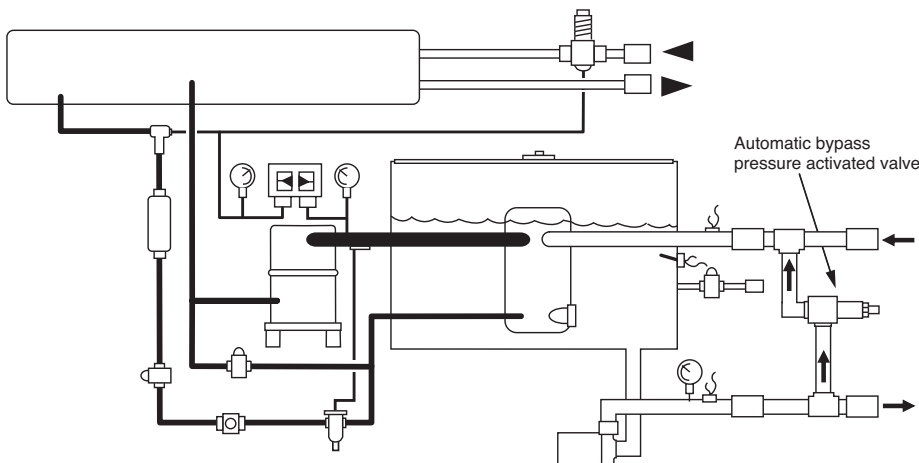
TEMPERATURE CONTROLLERS... PORTABLE CHILLERS... CENTRAL CHILLERS... PUMP TANK STATIONS... TOWER SYSTEMS...

**SUBJECT: LOW FLOW BYPASS CIRCUITS ON MAXIMUM PORTABLE CHILLERS UNDER 5 TONS**

#3-A-144 6/27/1995

In cases of restricted flow or reduced capacity conditions, as an option Advantage supplies manual or automatic low flow bypass circuits on **Maximum** water cooled or air cooled portable chillers under 5 tons.

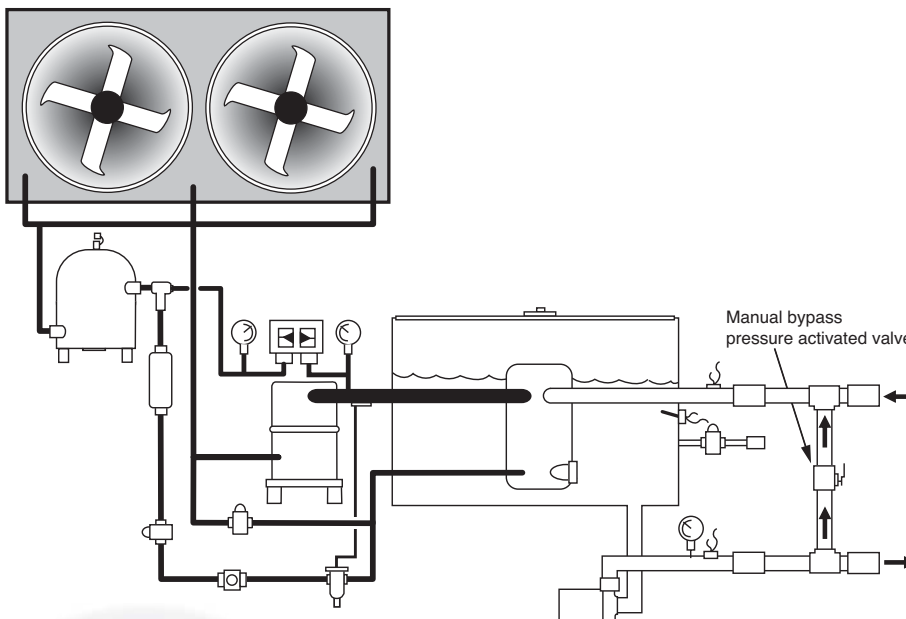
The low flow bypass circuit, whether automatic or manual, is designed to provide the chiller with the proper amount of flow through the chiller's evaporator continually. This prevents default on the low flow safety switch in times of restricted flow or reduced capacity.



**AUTOMATIC** low flow bypass circuits place a pressure actuated valve between the from process and to process lines.

Advantage presets the valve to open at the pump's dead head pressure to prevent overloading and to provide proper flow to the evaporator at all times.

Water-cooled portable chiller schematic shown, automatic low flow bypass circuits can be installed on air cooled units also.



**MANUAL** low flow bypass circuits place a ball valve between the from process and to process lines.

The valve is shipped in the closed position and then field adjusted based on process requirements.

Air-cooled schematic shown, manual low flow bypass circuits can be installed on water cooled units also.