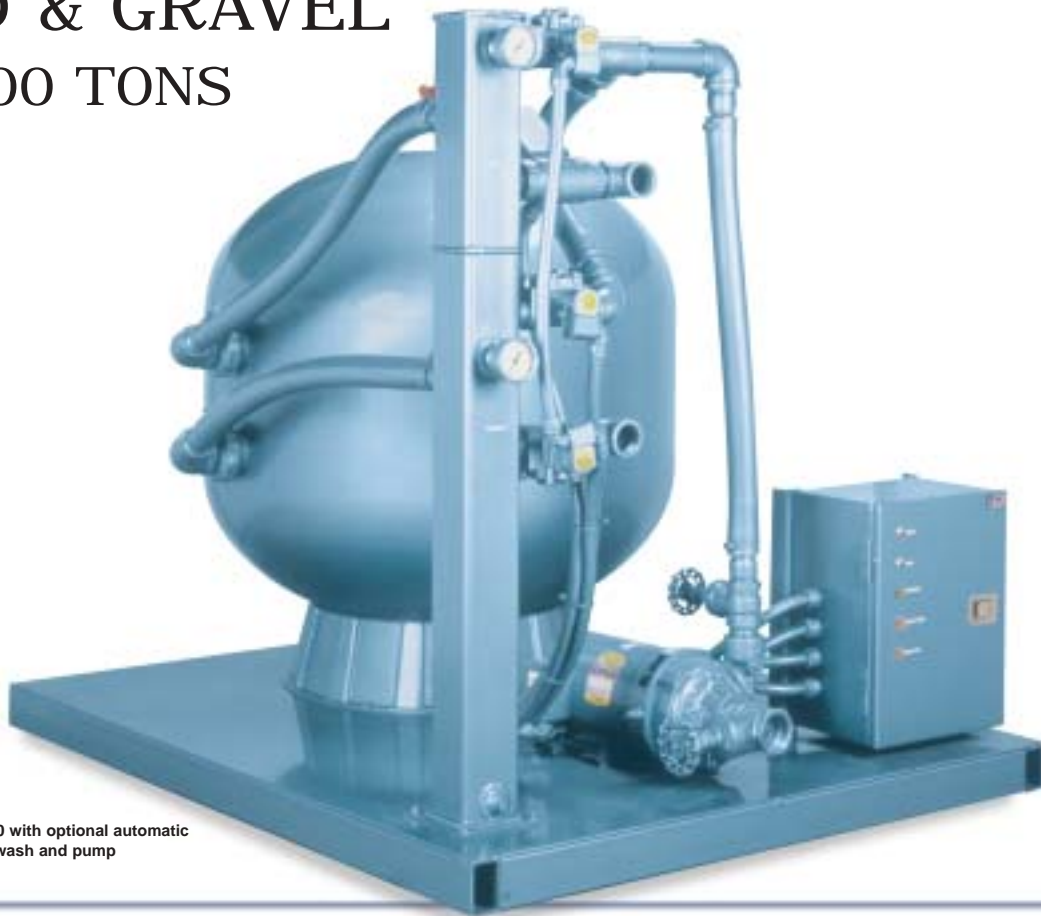


3 Models
To Choose

SOLIDS FILTRATION

SAND & GRAVEL 20 - 300 TONS



PM-30 with optional automatic backwash and pump

ADVANTAGE PM permanent media sand and gravel filters remove free floating solids from plant circulating liquids, preventing blockage in manifolds and orifices located in process equipment. Three sizes are offered to allow tailoring to specific process requirements.

APPLICATION RANGE:

- 20-99 tons - PM-24
- 100-199 tons - PM-30
- 200-300 tons - PM-36

MAXIMUM CAPACITIES:

- 40 gpm - PM-24
- 70 gpm - PM-30
- 100 gpm - PM-36

STANDARD DIMENSIONS:

- 42" x 32" x 40" (HxWxD) for the PM-24 model
- 46" x 48" x 48" (HxWxD) for the PM-30 model
- 52" x 48" x 48" (HxWxD) for the PM-36 model

PM filter systems are available as standard with a manual backwash system, using a multi-port valve assembly. The optional automatic backwash cycle uses electrically energized valves and an adjustable timing circuit to provide maintenance free cleaning based on specific system requirements. **PM** filters are available with an optional integral pump assembly.

FEATURES - AT A GLANCE:

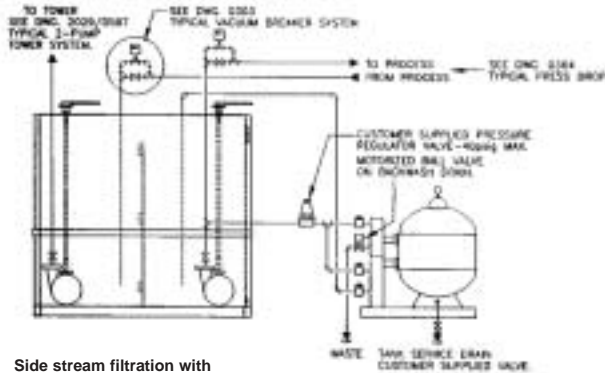
- High Quality fiberglass construction
- High flow rates
- Manual or automatic backflush
- Optional integral pump
- Great for chilled or tower water systems
- Structural steel base with decking
- Sand and gravel media



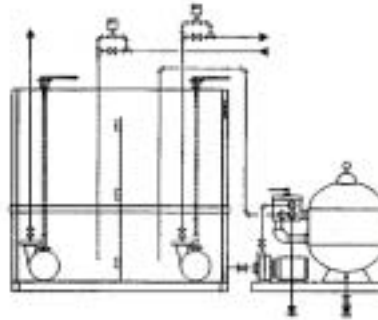
SPECIFICATIONS

'PM' SERIES FILTERS		PM-24	PM-30	PM-36
MAXIMUM CAPACITY	GPM	40	70	100
APPLICATION RANGE	Tons	20 - 99	100 - 199	200 - 300
USED WITH TANK		PTS-275	PTS-750	PTS-1500
SET MODEL		PTS-600	PTS-1250	PTS-3000
MEDIA REQUIRED	Gravel	100lbs	175lbs	250lbs
	Sand	160lbs	400lbs	500lbs
PROCESS CONNECTION	Inches	1	1 1/4	1 1/2
OPTION PUMP HP	HP	1 1/2	2	3
DIMENSIONS without pump	Height	42"	46"	52"
	Width	32"	32"	48"
	Depth	40"	40"	48"
	Weight	400lbs	700lbs	900lbs
DIMENSIONS with pump	Height	42"	46"	52"
	Width	32"	48"	48"
	Depth	40"	48"	48"
	Weight	425lbs	730lbs	935lbs

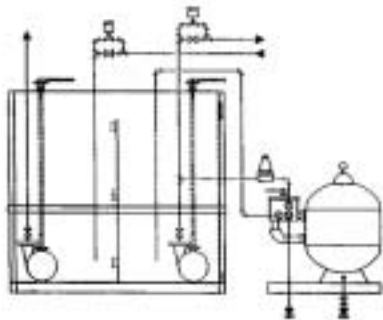
INSTALLATION SCHEMATICS



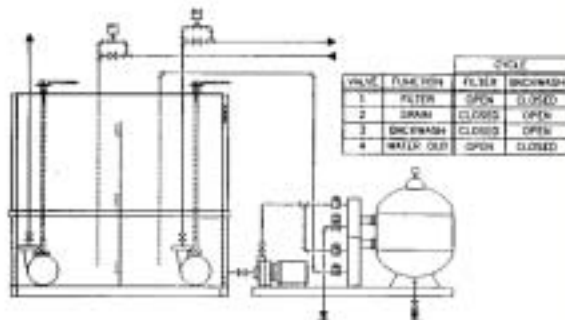
Side stream filtration with automatic back wash.



Manual backwash with integral pump.



Side stream filtration with manual backwash.



Automatic backwash with integral pump.

VALVE	FILTRATION	FILTER	BACKWASH
1	FILTER	OPEN	CLOSED
2	DRAIN	CLOSED	OPEN
3	BACKWASH	CLOSED	OPEN
4	WATER OUT	OPEN	CLOSED

STANDARD & OPTIONAL FEATURES

FILTER CONSTRUCTION:

- Seamless fiberglass shell
- Sightglass viewport
- Multiport switching valve assembly - for manual switching to backwash mode
- Radial water distributor
- Sand and gravel media
- Lateral collecting system

PRESSURE GAUGES:

- Filter pressure gauge
- Supply pressure gauge (with automatic backwash option)
- Return pressure gauge (with automatic backwash option)

AUTOMATIC BACKWASH: (optional)

- Timer controlled - housed in NEMA rated cabinet
- Supply and return manifolds
- Solenoid and motorized switching valves

CIRCULATING PUMP: (optional)

- Centrifugal
- Motor driven
- Suction valve
- Discharge valve
- Motor contactor with overload relay housed in NEMA rated cabinet

WARRANTY:

- 1 year parts and labor

WARRANTY and SERVICE... The MLS filter is supported by a comprehensive factory warranty. Refer to bulletin ADV-205 for complete warranty details. The **ADVANTAGE** service department is staffed with experienced technicians, and is supported by a network of independent service contractors. With **ADVANTAGE**, service is only a phone call away.



since 1977

ADVANTAGE PRODUCTS: TEMPERATURE CONTROLLERS • PORTABLE CHILLERS • CENTRAL CHILLERS • PUMP TANK STATIONS • TOWER SYSTEMS • FILTERS

ADVANTAGE ENGINEERING, INC. 525 East Stop 18 Road Greenwood, IN 46142 phone: 317-887-0729 fax: 317-881-1277

web site: <http://www.AdvantageEngineering.com> email: sales@AdvantageengineEring.com ©2002 ADVANTAGE ENGINEERING, INC. Form #ADV-387 11/02 updated 6/03

SINCE PRODUCT INNOVATION AND IMPROVEMENT IS OUR CONSTANT GOAL, ALL FEATURES AND SPECIFICATIONS ARE SUBJECT TO CHANGE WITHOUT NOTICE OR LIABILITY.